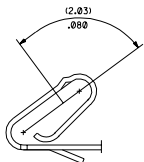
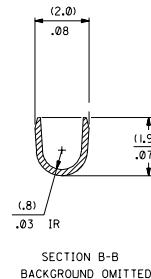
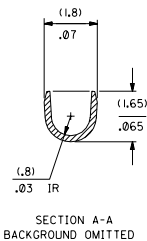
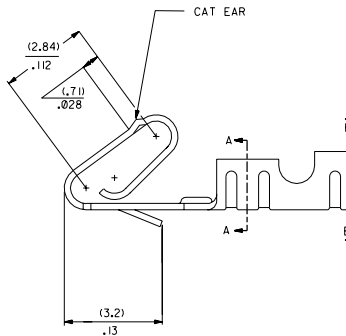
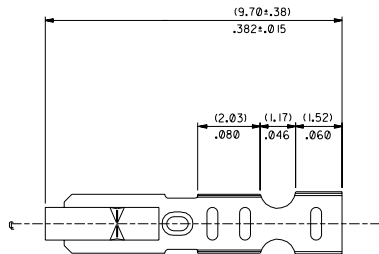
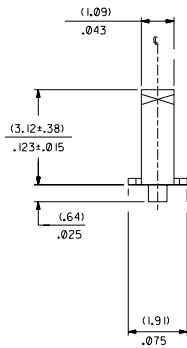
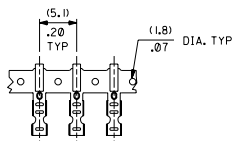


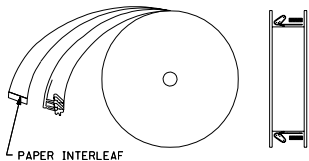
SELECT GOLD LOCATION



CARRIER VIEW



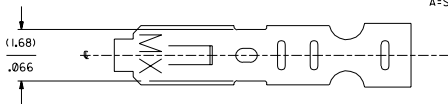
WINDING DETAIL B



- NOTES:
1. CRIMP IS FOR 22-30 GA WIRE, WITH .062 DIA INSULATION MAX.
 2. INSERTION FORCE OF TERMINAL INTO .100 & CONNECTOR IS 2.5 LBS. MAX
 3. TERMINALS MUST RETAIN 8 LBS PULL FOR 1 MIN. IN KK .100 & HOUSING.
 4. PARTS CONFORM TO PS-10-07
 5. MATERIAL: .0080+.0004 THICK PHOS BRONZE ALLOY 510
 6. DIMENSIONS GIVEN ACROSS CENTERLINES ARE SYMMETRICAL ABOUT THOSE CENTERLINES WITHIN HALF THE TOTAL TOLERANCE.

41572-*(***)*

MATERIAL L=LOOSE
A=SEE NOTE 5 FORM
L=LOOSE
BLANK=CHAIN PER DETAIL A



PLATING

PER SDES-88

*P909) OVERALL HOT TIN DTP: .00254 MICROMETERS MIN

(550) SELECT GOLD: .00038 MICROMETERS MIN.

OVERALL GOLD FLASH: .00005 MICROMETERS MIN.

OVERALL NICKEL UNDERPLATE: .00076 MICROMETERS MIN.

(555) SELECT GOLD: .00038 MICROMETERS MIN.

OVERALL NICKEL UNDERPLATE: .00076 MICROMETERS MIN.

*THE PRIMARY SHIPPING CARTON WILL BE LABELED 'COMPLIANT TO RoHS DIRECTIVE 2002/95/EC AND ELV ANNEX II) OF DIRECTIVE 2000/53/EC.' CARTONS WITHOUT THIS LABEL MAY CONTAIN PRODUCT WITH TIN-LEAD PLATING.

PART NO.	ENG NO.
08-65-0804	41572-A(P909)
08-65-0805	41572-A(P909)L
	41572-A(555)
	41572-A(555)L
	41572-A(550)
	41572-A(550)L

D	CHG P913 TO P909 10/2004-181 K-S-SCHAEFER
C	ADD TO CAD ECR U30423 3-19-93 SAMIEC

DIMENSIONS SHOWN METRIC INCH		REV. = 0		REVISE ONLY ON CAD SYSTEM	
1 PLATE ± 0.10	INCH	DATE	1/1	3/19/93	1
2 PLATE ± 0.15	INCH	CRIMP TERMINAL 22-30 GA WIRE			
3 PLATE ± 0.38	INCH	SAME AS 6459 EXCEPT CAT EAR			
MATERIAL: .0080+.0004 THICK PHOS BRONZE ALLOY 510		MOLEX INCORPORATED		SHEET NO. 1 OF 1	
DRAWN: MOLEX, APPLICABLE MUST READ WITH DIMENSIONS		LIT/LAL: 0805Z		U.S.A.	
BY: SAMIEC		DATE: 10/2004		DRAWN: K-S-SCHAEFER	
APP'D: LENZ		SCALE: 1:1		C.D.	